

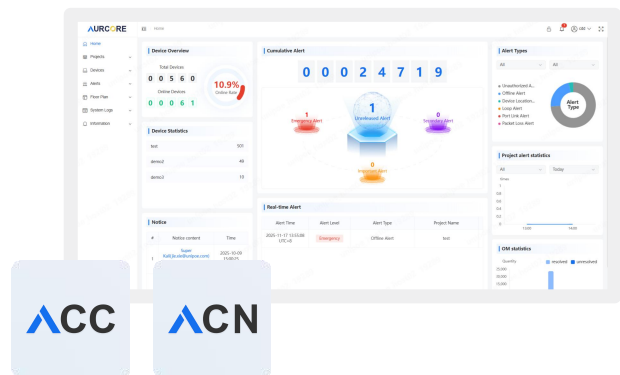
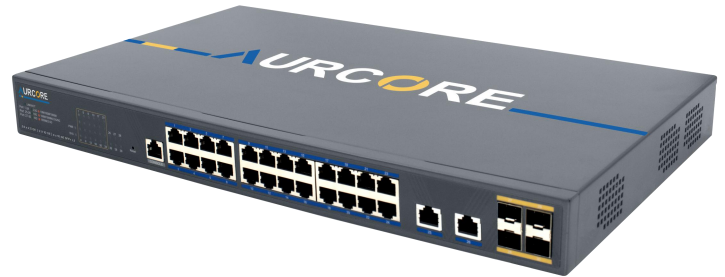
240Gbps

24 x 2.5GE | 2 x 10 GE | 4 x 10 GE SFP+ | L3

Overview

The **AES4102** is a robust, enterprise-grade managed Ethernet switch designed to meet the demands of modern networks across commercial and educational environments. Built for high reliability and seamless integration, it supports advanced traffic management, secure segmentation, and centralized control through AURC-NOS using ACC & ACN platforms.

Whether deployed in structured enterprise settings, the **AES4102** delivers consistent performance, simplified wiring, and resilient operation. Its surge protection, and flexible uplink options make it a versatile backbone for connecting critical devices across distributed infrastructures.



ACC ACN

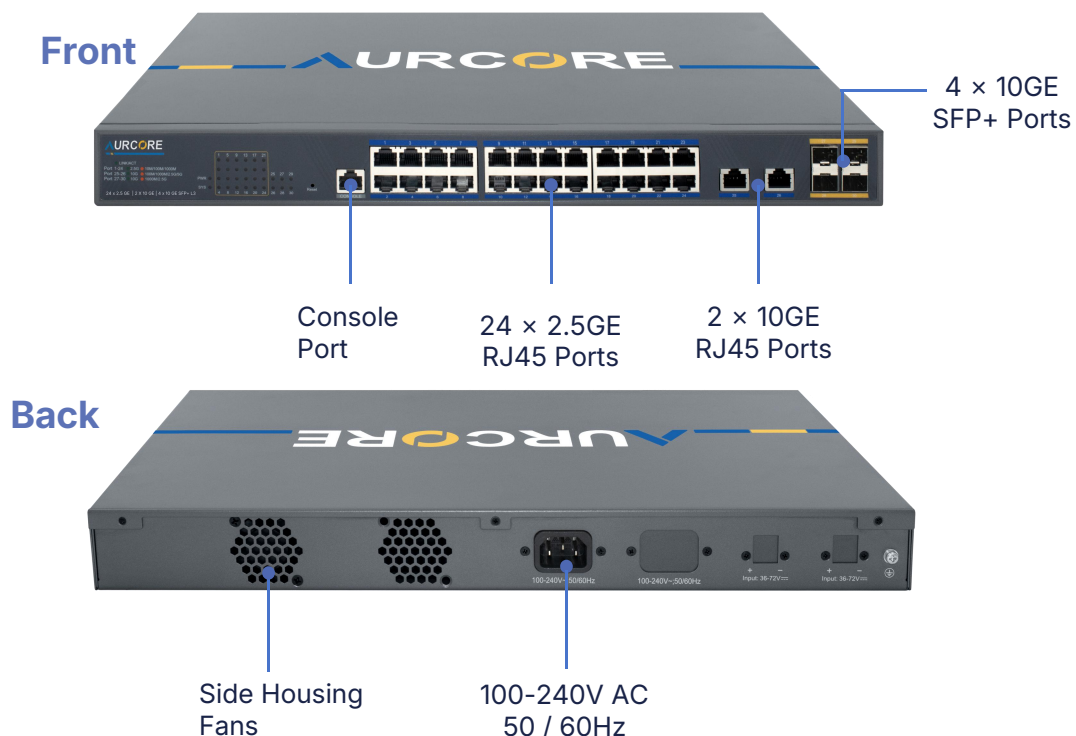
Product Highlights

- Optimized for IoT deployments, smart buildings and high-density cloud environment
- 24 x 2.5GE (RJ45 ports), 2 x 10GE RJ45 uplinks and 4 x 10GE SFP+ uplink ports
- Switching capacity: 240 Gbps; forwarding rate: 178.56 Mpps
- Compact Layer 3 managed switch for enterprise-grade networking
- Surge Protection: Differential mode $\pm 4KV$. Common mode $\pm 6KV$
- Operating temperature range: 0°C to 40°C (32°F to 104°F)
- Strong Compatibility: Compatible with mainstream terminal devices in the industry, such as APs and IP Cameras
- Supports Static Routing, VLAN, STP, RSTP, MSTP, QoS, ACL, OSPF, BGP, VRRP, PIM and QoS functions
- Managed via Telnet, SSH, SNMP, Web GUI, CLI, AURC-NOS and ACC/ACN unified platform

Hardware Specifications

Model	AES4102
Interface	24 x 2.5 GE 2 x 10 GE 4 x 10 GE SFP+ L3
Management Port	1 x Console Port
Chipset	Realtek
Mac Address Table	32 K
Packet Forwarding Rate	178.56 Mpps
Switching Capacity	240 Gbps
Flash	32 MB
Memory	4 Gb
Power Supply	60 W
Power Consumption	Idling: 115Vac/60Hz 28.6W Idling: 230Vac/50Hz 28.5W Full load: 115Vac/60Hz 65.2W Full load: 230Vac/50Hz 64.2W
Operating Temperature	0 °C to 40 °C (32 °F to 104 °F)
Storage Temperature	-40 °C to 70 °C (-40 °F to 158 °F)
Surge Protection	Differential mode ±4KV, Common mode ±6KV
Electrostatic Standards	Contact ±6KV, Air ±8KV
Dimension(L*W*H)	17.32" × 10.24" × 1.73"
Installation	Rack mount or Desktop mount
Accessories	Rack Mount Kit *2, Rubber Feet *4, Screw *8, Console Cable *1, Power Cord *1

Hardware Panel



Software Specifications

HIGH AVAILABILITY

- Support 4K Active VLAN, Voice VLAN
- Support static/LACP link aggregation
- Support BPDU Guard/filtering/transparent
- Support Root Guard and Loopback detection
- Support FTP, TFTP and SFTP
- Support IGMP Snooping

NETWORK CONFIGURATION

- Support Web management
- Support SNMP v1, v2c, v3, SNMP Trap
- Supports RSPAN, multiple configuration files
- Support MIB-II, NTP, Ping, Traceroute and ZTP(Zero Touch Provisioning)
- Support LLDP (802.1ab)
- Support flow-based mirror
- Support Static Routing, RIP, OSPF, BGP, VRRP, PIM

QoS FUNCTION

- **Rate Limiting:** Port-based (incoming/outgoing), Stream-based rate limiting
- **Class Of Service:** Based on port, source-destination MAC, source-destination IP, 802.1p, CoS, DSCP, IP priority
- **Prioritization Algorithm:** WRR,SP, WDRR, DSCP & CoS mapping
- Loop Detection: ERPS

SECURITY

- **Access Control:** Port Security, Port Isolation, IP source protection, Dynamic ARP protection, DHCP Snooping, DHCP Relay, IEEE802.1x AAA, ACL, User hierarchy, RADIUS/TACACS+, authentication(RFC2138)
- **Data Protection:** Broadcast storm suppression, Illegal packet detection, DDoS Attack Prevention,HTTPs and SSL

RELIABILITY

- **Link Protection:** STP, RSTP, MSTP, Stacking BPDU Guard, STP Root Guard, Loop Protection/Detection, BFD Detection, Ethernet OAM, ULDP.ERPS fast ring network protection, MRPP fast link switching

MANAGEMENT & MAINTENANCE

- **Interfaces:** Console port, Telnet, SSH
- **Protocols:** SNMPv1/v2c/v3, TFTP (file upload/download)
- **Management Modes:** CLI command line, Web NMS, TELNET
- **Functions:** Firmware Upgrade, Configuration Export/Import, DHCP Client (Option 82/66/67) Event/Error Logs (System Log), Management Access Control, Port Mirror, LLDP (IEEE802.1AB) LLDP-MED, DNS Client, Trace-route, Ping, DDMI. NTP/ SNTP (RFC2030)

