

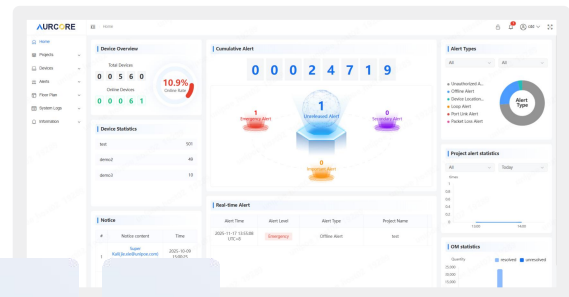
24 Gbps

8 x GE | 4 x GE Base-T/SFP Combo | PoE+

## Overview

The **AIS2003P** is a compact, industrial-grade Layer 2+ managed switch engineered for high-performance networking in demanding environments. It simplifies deployment in applications such as surveillance and IoT/IloT wireless access by supporting Power over Ethernet (PoE+), reducing cabling complexity and installation costs.

Additional capabilities include dual power input support, integrated lightning and ESD protection, and versatile management options via Console, SSH, and Web interfaces using AURC-NOS ACC/ACN. Ideal for industrial automation, transportation infrastructure, and outdoor deployments, the **AIS2003P** delivers robust connectivity with streamlined integration.



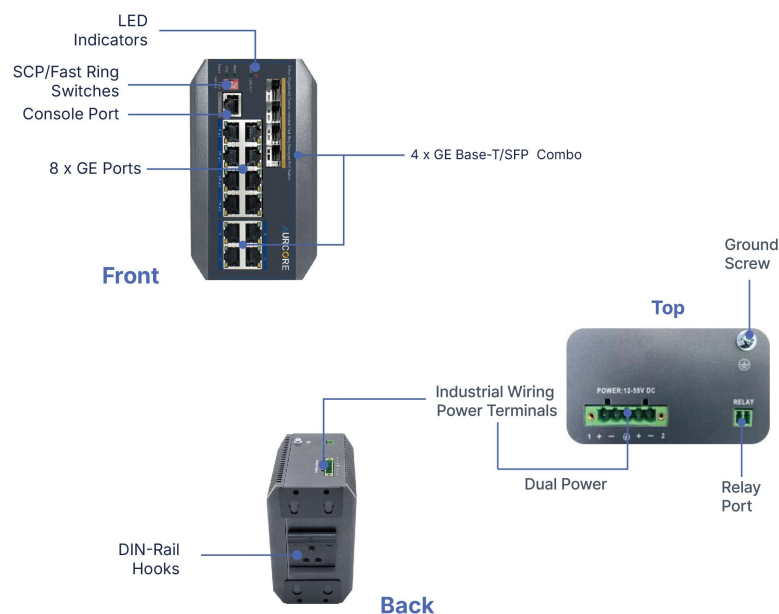
## Product Highlights

- Optimized for smart manufacturing, transportation, and outdoor IoT/IloT deployments
- 8 x GE (PoE+ RJ45 ports) and 4 x GE Base-T/SFP Combo ports
- Compact Layer 2+ managed switch for industrial-grade networking
- Switching capacity: 24 Gbps; forwarding rate: 17.85 Mpps
- Wide operating temperature range: -40°C to 75°C for harsh environments
- Handheld Design : Easy to carry and install.
- One-key Fast ring & One-key Storm Control: ERPS with fault recovery time ≤ 20ms
- Fanless, All-aluminum High-density Cooling Design: Lightweight and High-efficiency heat dissipation
- Surge Protection: Differential mode ±2KV, Common mode ±6KV
- Dual power input design with power-down auto-restart and relay alarm support
- Jumbo frame support up to 9216 bytes for high-throughput applications
- Advanced AurC-PoE Technology: PoE Watch dog, PoE Schedule, PoE Port Priority, PoE Warm Start
- Supports Static Routing, QoS, STP, RSTP, MSTP and ERPS
- Managed via Telnet, SSH, SNMP, Web GUI, CLI, AURC-NOS and ACC/ACN unified platform

# Hardware Specifications

Model	AIS2003P
Interface	8 x GE   4 x GE Base-T/SFP Combo   PoE+
Management Port	1 x Console Port
Chipset	Realtek
Mac Address Table	8 K
Packet Forwarding Rate	17.85 Mpps
Switching Capacity	24 Gbps
Flash	32 MB
Memory	128 MB
PoE Standard	IEEE 802.3af/at
Power Supply	DC 48–57 V
Power Consumption	Idling: 48V 4.8W Idling: 57V 5.13W Full load: 48V 195.36W Full load: 57V 198.36W
PoE Budget	185W
Operating Temperature	-40 °C to 75 °C (-40 °F to 167 °F)
Storage Temperature	-40 °C to 80 °C (-40 °F to 176 °F)
Surge Protection	Differential mode ±2KV, Common mode ±6KV
Electrostatic Standards	Contact ±6KV, Air ±8KV
Dimension(L*W*H)	5.71" × 4.33" × 3.30"
Installation	DIN-rail Mount or Rack mount
Accessories	Phoenix Terminal*2, Console Cable*1

## Hardware Panel



# Software Specifications

## HIGH AVAILABILITY

- Support 4K Active VLAN, Voice VLAN
- Support static/LACP link aggregation
- Support BPDU Guard/filtering/transparent
- Support Root Guard and Loopback detection
- Support FTP, TFTP and SFTP
- Support IGMP Snooping

## NETWORK CONFIGURATION

- Support Web management
- Support SNMP v1, v2c, v3, SNMP Trap
- Supports RSPAN, multiple configuration files
- Support MIB-II, NTP, Ping, Traceroute and ZTP(Zero Touch Provisioning)
- Support LLDP (802.1ab)
- Support flow-based mirror
- Support Static Routing

## QoS FUNCTION

- **Rate Limiting:** Port-based (incoming/outgoing), Stream-based rate limiting
- **Class Of Service:** Based on port, source-destination MAC, source-destination IP, 802.1p, CoS, DSCP, IP priority
- **Prioritization Algorithm:** WRR,SP, WDRR, DSCP & CoS mapping
- Loop Detection: ERPS

## SECURITY

- **Access Control:** Port Security, Port Isolation, IP source protection, Dynamic ARP protection, DHCP Snooping, DHCP Relay, IEEE802.1x AAA, ACL, User hierarchy, RADIUS/TACACS+, authentication(RFC2138)
- **Data Protection:** Broadcast storm suppression, Illegal packet detection, DDoS Attack Prevention, HTTPs and SSL

## RELIABILITY

- **Link Protection:** STP, RSTP, MSTP, BPDU Guard, STP Root Guard, Loop Protection/Detection, BFD Detection, Ethernet OAM, ULDP.ERPS fast ring network protection, MRPP fast link switching

## MANAGEMENT & MAINTENANCE

- **Interfaces:** Console port, Telnet, SSH
- **Protocols:** SNMPv1/v2c/v3, TFTP (file upload/ download)
- **Management Modes:** CLI command line, Web NMS, TELNET
- **Functions:** Firmware Upgrade, Configuration Export/Import, DHCP Client (Option 82/66/67) Event/Error Logs (System Log), Management Access Control, Port Mirror, LLDP (IEEE802.1AB) LLDP-MED, DNS Client, Trace-route, Ping, DDMI. NTP/ SNTP (RFC2030)

