

240Gbps

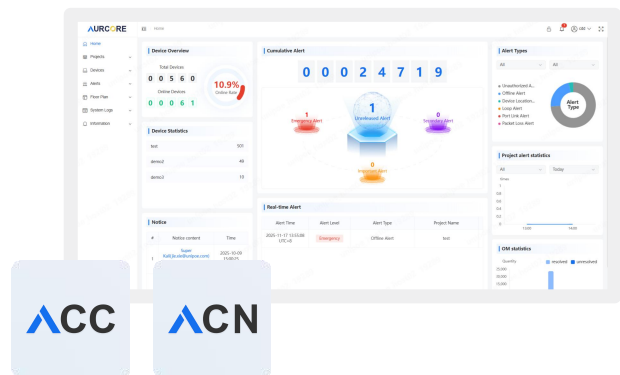
24 x 2.5 GE | 2 x 10 GE | 4 x 10 GE SFP+ | L3 PoE+

Overview

The **AES4102P** is a robust, enterprise-grade managed Ethernet switch designed to meet the demands of modern networks across commercial and educational environments. Built for high reliability and seamless integration, it supports advanced traffic management, secure segmentation, and centralized control through AURC-NOS using ACC & ACN platforms.



Whether deployed in structured enterprise settings, the **AES4102P** delivers consistent performance, simplified wiring, and resilient operation. Its PoE+ capabilities, surge protection, and flexible uplink options make it a versatile backbone for powering and connecting critical devices across distributed infrastructures.



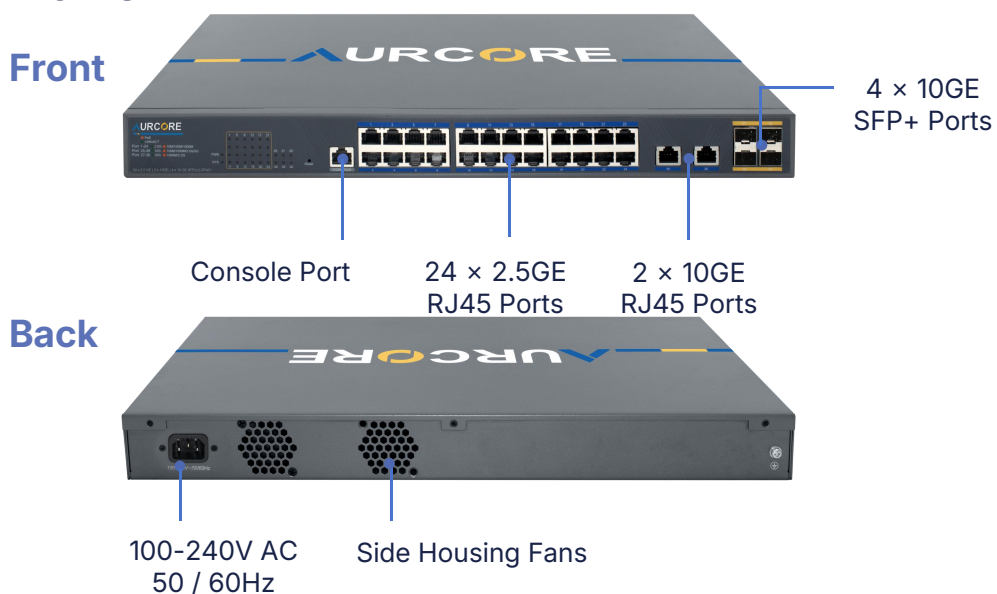
Product Highlights

- 24 × 2.5GE (PoE+ RJ45 ports), 2 × 10GE RJ45 uplinks and 4 × 10GE SFP+ uplink ports
- Support both IEEE 802.3af PoE and IEEE 802.3at PoE+
- Switching capacity: 240 Gbps; forwarding rate: 178.56 Mpps
- Compact Layer 3 managed switch for enterprise-grade networking
- Surge Protection: Differential mode ±4KV, Common mode ±6KV
- Operating temperature range: 0°C to 40°C (32°F to 104°F)
- Strong Compatibility: Compatible with mainstream terminal devices in the industry, such as APs and IP Cameras
- Advanced AurC-PoE Technology: PoE Watch dog, PoE Schedule, PoE Port Priority, PoE Warm Start
- Supports Static Routing, VLAN, STP, RSTP, MSTP, QoS, ACL, OSPF, BGP, VRRP, PIM and QoS functions
- Managed via Telnet, SSH, SNMP, Web GUI, CLI, AURC-NOS and ACC/ACN unified platform

Hardware Specifications

| | |
|-------------------------|--|
| Model | AES4102P |
| Interface | 24 x 2.5 GE 2 x 10 GE 4 x 10 GE SFP+ L3 PoE+ |
| Management Port | 1 x Console Port |
| Chipset | Realtek |
| Chip Type | RTL9313-CG |
| Mac Address Table | 32 K |
| Packet Forwarding Rate | 178.56 Mpps |
| Switching Capacity | 240 Gbps |
| Flash | 32 MB |
| Memory | 4 Gb |
| PoE Standard | IEEE 802.3af/at |
| Power Supply | 438 W |
| Power Consumption | Idling: 115Vac/60Hz 30.7W Idling: 230Vac/50Hz 30.3W Full load: 115Vac/60Hz 470.6W Full load: 230Vac/50Hz 456.8W |
| PoE Budget | 370 W |
| Operating Temperature | 0 °C to 40 °C (32 °F to 104 °F) |
| Storage Temperature | -40 °C to 70 °C (-40 °F to 158 °F) |
| Surge Protection | Differential mode ±4KV, Common mode ±6KV |
| Electrostatic Standards | Contact ±6KV, Air ±8KV |
| Dimension(L*W*H) | 17.32" × 10.24" × 1.73" |
| Installation | Rack mount or Desktop mount |
| Accessories | Rack Mount Kit *2, Rubber Feet *4, Screw *8, Console Cable *1, Power Cord *1 |

Hardware Panel



Software Specifications

HIGH AVAILABILITY

- Support 4K Active VLAN, Voice VLAN
- Support static/LACP link aggregation
- Support BPDU Guard/filtering/transparent
- Support Root Guard and Loopback detection
- Support FTP, TFTP and SFTP
- Support IGMP Snooping

NETWORK CONFIGURATION

- Support Web management
- Support SNMP v1, v2c, v3, SNMP Trap
- Supports RSPAN, multiple configuration files
- Support MIB-II, NTP, Ping, Traceroute and ZTP(Zero Touch Provisioning)
- Support LLDP (802.1ab)
- Support flow-based mirror
- Support Static Routing, RIP, OSPF, BGP, VRRP, PIM

QoS FUNCTION

- **Rate Limiting:** Port-based (incoming/outgoing), Stream-based rate limiting
- **Class Of Service:** Based on port, source-destination MAC, source-destination IP, 802.1p, CoS, DSCP, IP priority
- **Prioritization Algorithm:** WRR,SP, WDRR, DSCP & CoS mapping
- Loop Detection: ERPS

SECURITY

- **Access Control:** Port Security, Port Isolation, IP source protection, Dynamic ARP protection, DHCP Snooping, DHCP Relay, IEEE802.1x AAA, ACL, User hierarchy, RADIUS/TACACS+, authentication(RFC2138)
- **Data Protection:** Broadcast storm suppression, Illegal packet detection, DDoS Attack Prevention, HTTPs and SSL

RELIABILITY

- **Link Protection:** STP, RSTP, MSTP, Stacking BPDU Guard, STP Root Guard, Loop Protection/Detection, BFD Detection, Ethernet OAM, ULDP.ERPS fast ring network protection, MRPP fast link switching

MANAGEMENT & MAINTENANCE

- **Interfaces:** Console port, Telnet, SSH
- **Protocols:** SNMPv1/v2c/v3, TFTP (file upload/download)
- **Management Modes:** CLI command line, Web NMS, TELNET
- **Functions:** Firmware Upgrade, Configuration Export/Import, DHCP Client (Option 82/66/67) Event/Error Logs (System Log), Management Access Control, Port Mirror, LLDP (IEEE802.1AB) LLDP-MED, DNS Client, Trace-route, Ping, DDMI. NTP/ SNTP (RFC2030)

