

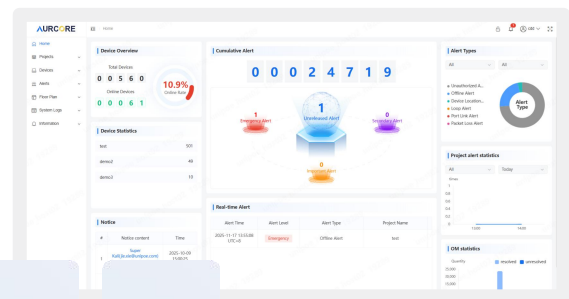
96 Gbps

8 x GE | 4 x 10 GE SFP+ | L3

Overview

The **AIS4001** is a compact, industrial-grade Layer 3 managed switch engineered for high-performance networking in demanding environments. It simplifies deployment in applications such as surveillance and IoT/IloT wireless access, reducing cabling complexity and installation costs.

Additional capabilities include dual power input support, integrated lightning and ESD protection, and versatile management options via Console, SSH, and Web interfaces using AURC-NOS ACC/ACN. Ideal for industrial automation, transportation infrastructure, and outdoor deployments, the **AIS4001** delivers robust connectivity with streamlined integration.



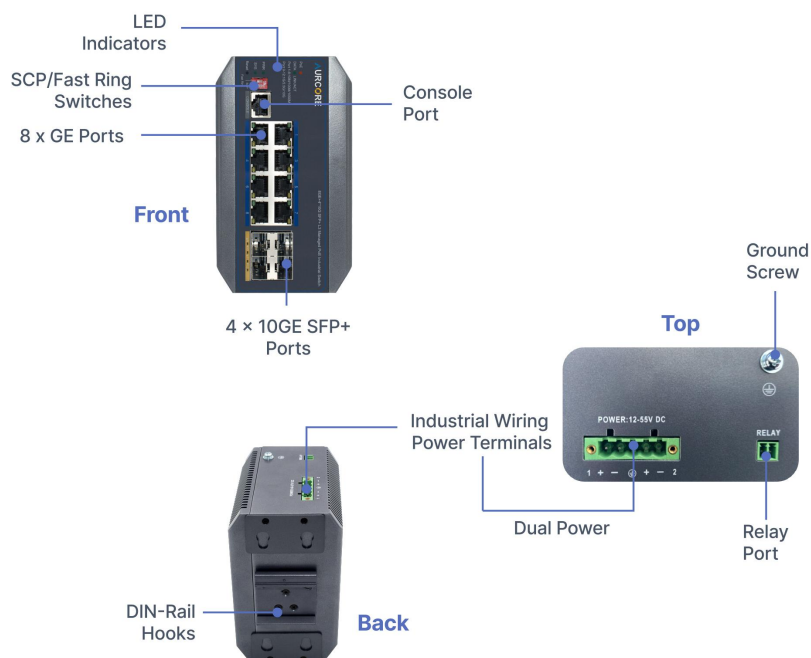
Product Highlights

- Optimized for smart manufacturing, transportation, and outdoor IoT/IloT deployments
- 8 x GE (RJ45 ports) and 4 x 10GE SFP+ uplink ports
- Compact Layer 3 managed switch for industrial-grade networking
- Switching capacity: 96 Gbps; forwarding rate: 71.42 Mpps
- Wide operating temperature range: -40°C to 75°C for harsh environments
- Handheld Design : Easy to carry and installation.
- One-key Fast ring & One-key Storm Control: ERPS with fault recovery time ≤ 20ms
- Fanless, All-aluminum High-density Cooling Design: Lightweight and High-efficiency heat dissipation
- Surge Protection: Differential mode ±2KV, Common mode ±4KV
- Dual power input design with power-down auto-restart and relay alarm support
- Jumbo frame support up to 9216 bytes for high-throughput applications
- Supports Static Routing, QoS, STP, RSTP, MSTP, ERPS, OSPF, BGP, VRRP, PIM
- Managed via Telnet, SSH, SNMP, Web GUI, CLI, AURC-NOS and ACC/ACN unified platform

Hardware Specifications

Model	AIS4001
Interface	8 x GE 4 x 10 GE SFP+ L3
Management Port	1 x Console Port
Chipset	Realtek
Mac Address Table	16 K
Packet Forwarding Rate	71.42 Mpps
Switching Capacity	96 Gbps
Flash	64 MB
Memory	8 Gb
Power Supply	DC 12–55 V
Power Consumption	Idling: 12V 5.40W Idling: 55V 6.05W Full load: 12V 12.25W Full load: 55V 12.10W
Operating Temperature	-40 °C to 75 °C (-40 °F to 167 °F)
Storage Temperature	-40 °C to 80 °C (-40 °F to 176 °F)
Surge Protection	Differential mode ±2KV, Common mode ±4KV
Electrostatic Standards	Contact ±6KV, Air ±8KV
Dimension(L*W*H)	5.71" × 4.33" × 3.30"
Installation	DIN-rail Mount or Rack mount
Accessories	Phoenix Terminal*2, Console Cable*1

Hardware Panel



Software Specifications

HIGH AVAILABILITY

- Support 4K Active VLAN, Voice VLAN
- Support static/LACP link aggregation
- Support BPDU Guard/filtering/transparent
- Support Root Guard and Loopback detection
- Support FTP, TFTP and SFTP
- Support IGMP Snooping

NETWORK CONFIGURATION

- Support Web management
- Support SNMP v1, v2c, v3, SNMP Trap
- Supports RSPAN, multiple configuration files
- Support MIB-II, NTP, Ping, Traceroute and ZTP(Zero Touch Provisioning)
- Support LLDP (802.1ab)
- Support flow-based mirror
- Support Static Routing, RIP, OSPF, BGP, VRRP, PIM

QoS FUNCTION

- **Rate Limiting:** Port-based (incoming/outgoing), Stream-based rate limiting
- **Class Of Service:** Based on port, source-destination MAC, source-destination IP, 802.1p, CoS, DSCP, IP priority
- **Prioritization Algorithm:** WRR,SP, WDRR, DSCP & CoS mapping
- Loop Detection: ERPS

SECURITY

- **Access Control:** Port Security, Port Isolation, IP source protection, Dynamic ARP protection, DHCP Snooping, DHCP Relay, IEEE802.1x AAA, ACL, User hierarchy, RADIUS/TACACS+, authentication(RFC2138)
- **Data Protection:** Broadcast storm suppression, Illegal packet detection, DDoS Attack Prevention, HTTPs and SSL

RELIABILITY

- **Link Protection:** STP, RSTP, MSTP, BPDU Guard, STP Root Guard, Loop Protection/Detection, BFD Detection, Ethernet OAM, ULDP.ERPS fast ring network protection, MRPP fast link switching

MANAGEMENT & MAINTENANCE

- **Interfaces:** Console port, Telnet, SSH
- **Protocols:** SNMPv1/v2c/v3, TFTP (file upload/download)
- **Management Modes:** CLI command line, Web NMS, TELNET
- **Functions:** Firmware Upgrade, Configuration Export/Import, DHCP Client (Option 82/66/67) Event/Error Logs (System Log), Management Access Control, Port Mirror, LLDP (IEEE802.1AB) LLDP-MED, DNS Client, Trace-route, Ping, DDMI. NTP/ SNTP (RFC2030)

