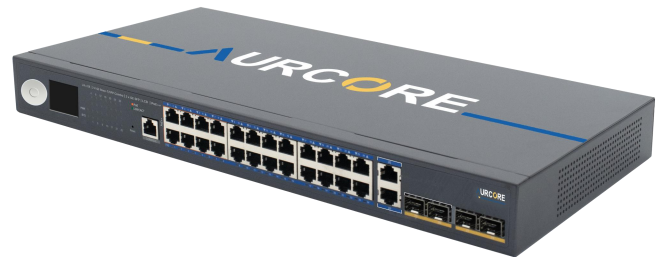


56Gbps

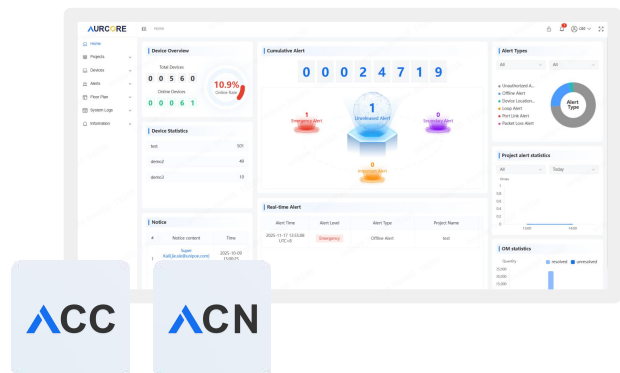
24 x GE | 2 x GE Base-T/SFP Combo | 2 x GE SFP | LCD | PoE++

Overview

The **AES2012P** is a robust, enterprise-grade managed Ethernet switch designed to meet the demands of modern networks across commercial and educational environments. Built for high reliability and seamless integration, it supports advanced traffic management, secure segmentation, and centralized control through AURC-NOS using ACC & ACN platforms.



Featuring an intuitive LCD for real-time monitoring of PoE status, bandwidth, and port loads, along with CCTV function for PoE transmission and intelligent control, the **AES2012P** offers versatile PoE++ support, surge protection, and flexible uplinks.



ACC ACN

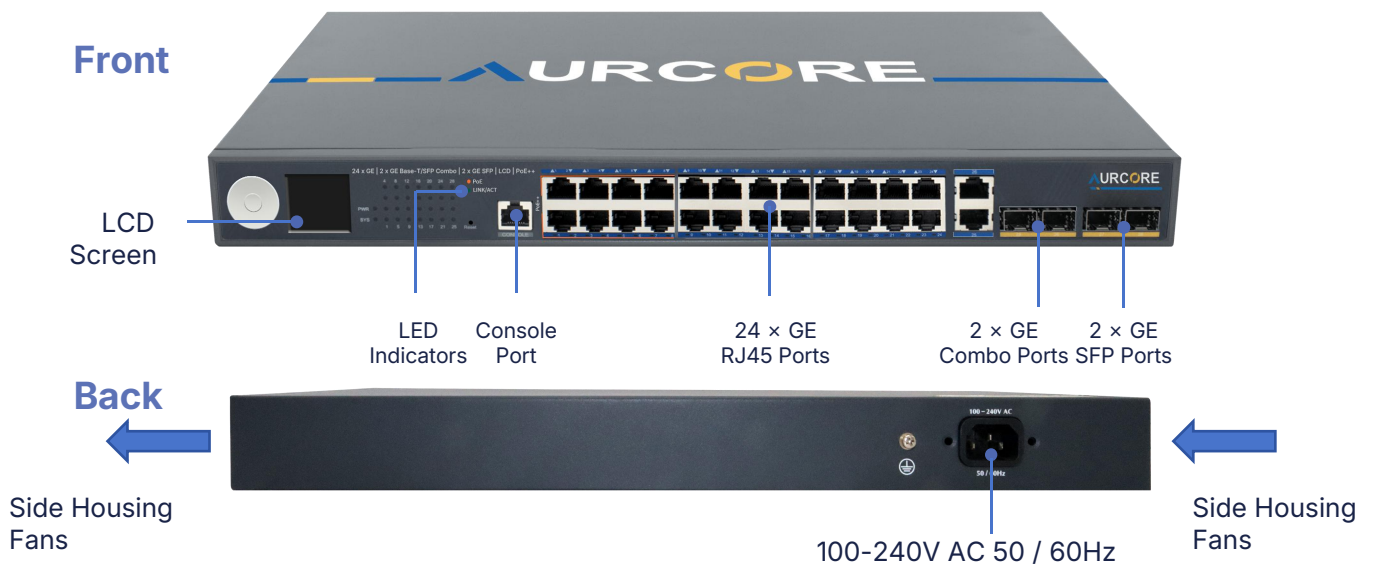
Product Highlights

- 24 × GE (PoE++ RJ45 ports), 2 x GE Combo ports and 2 × GE SFP uplink ports
- Support both IEEE 802.3af PoE, IEEE 802.3at PoE+ and IEEE 802.3bt PoE++
- Switching capacity: 56 Gbps; forwarding rate: 41.66 Mpps
- LCD on-site monitoring, real-time monitoring of device status and device configuration
- Compact Layer 2+ managed switch for enterprise-grade networking
- Surge Protection: Differential mode ±4KV, Common mode ±6 KV
- Operating temperature range: 0°C to 40°C (32°F to 104°F)
- Strong Compatibility: Compatible with mainstream terminal devices in the industry, such as APs and IP Cameras
- Advanced AurC-PoE Technology: PoE Watch dog, PoE Schedule, PoE Port Priority, PoE Warm Start
- Supports Static Routing, VLAN, STP, RSTP, MSTP, QoS and ACL functions
- Managed via Telnet, SSH, SNMP, Web GUI, CLI, AURC-NOS and ACC/ACN unified platform

Hardware Specifications

Model	AES2012P
Interface	24 x GE 2 x GE Base-T/SFP Combo 2 x GE SFP LCD PoE++
Management Port	1 x Console Port
Chipset	Realtek
Mac Address Table	8 K
Packet Forwarding Rate	41.66 Mpps
Switching Capacity	56 Gbps
Flash	32 MB
Memory	128 MB
PoE Standard	IEEE 802.3af/at/bt
Power Supply	500 W
Power Consumption	/
PoE Budget	480 W
Operating Temperature	0 °C to 40 °C (32 °F to 104 °F)
Storage Temperature	-40 °C to 70 °C (-40 °F to 158 °F)
Surge Protection	Differential mode ±4KV, Common mode ±6KV
Electrostatic Standards	Contact ±6KV, Air ±8KV
Dimension(L*W*H)	17.32" × 8.15" × 1.77"
Installation	Rack mount or desktop mount
Accessories	Rack Mount Kit *2, Rubber Feet *4, Screw *8, Console Cable *1, Power Cord *1

Hardware Panel



Software Specifications

HIGH AVAILABILITY

- Support 4K Active VLAN, voice VLAN
- Support static/LACP link aggregation
- Support BPDU Guard/filtering/transparent
- Support Root Guard and Loopback detection
- Support FTP, TFTP and SFTP
- Support IGMP Snooping

NETWORK CONFIGURATION

- Support Web management
- Support SNMP v1, v2c, v3, SNMP Trap
- Supports RSPAN, multiple configuration files
- Support MIB-II, NTP, Ping, Traceroute and ZTP(Zero Touch Provisioning)
- Support LLDP (802.1ab)
- Support flow-based mirror
- Support Static Routing

QoS FUNCTION

- **Rate Limiting:** Port-based (incoming/outgoing), Stream-based rate limiting
- **Class Of Service:** Based on port, source-destination MAC, source-destination IP, 802.1p, CoS, DSCP, IP priority
- **Prioritization Algorithm:** WRR,SP, WDRR, DSCP & CoS mapping
- **Loop Detection:** ERPS

SECURITY

- **Access Control:** Port Security, Port Isolation, IP source protection, Dynamic ARP protection, DHCP Snooping, DHCP Relay, IEEE802.1x AAA, ACL, User hierarchy, RADIUS/TACACS+, authentication(RFC2138)
- **Data Protection:** Broadcast storm suppression, Illegal packet detection, DDoS Attack Prevention, HTTPs and SSL

RELIABILITY

- **Link Protection:** STP, RSTP, MSTP, BPDU Guard, STP Root Guard, Loop Protection/Detection, BFD Detection, Ethernet OAM, ULDP.ERPS fast ring network protection, MRPP fast link switching

MANAGEMENT & MAINTENANCE

- **Interfaces:** Console port, Telnet, SSH
- **Protocols:** SNMPv1/v2c/v3, TFTP (file upload/download)
- **Management Modes:** CLI command line, Web NMS, TELNET
- **Functions:** Firmware Upgrade, Configuration Export/Import, DHCP Client (Option 82/66/67) Event/Error Logs (System Log), Management Access Control, Port Mirror, LLDP (IEEE802.1AB) LLDP-MED, DNS Client, Trace-route, Ping, DDMI. NTP/ SNTP (RFC2030)

