

104Gbps

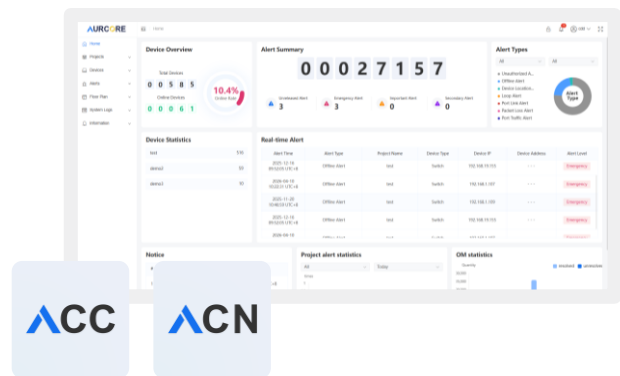
48 x GE | 4 x GE SFP | PoE+

## Overview

The **AES2003P** is a robust, enterprise-grade managed Ethernet switch designed to meet the demands of modern networks across commercial and educational environments. Built for high reliability and seamless integration, it supports advanced traffic management, secure segmentation, and centralized control through AURC-NOS using ACC & ACN platforms.



Whether deployed in structured enterprise settings, the **AES2003P** delivers consistent performance, simplified wiring, and resilient operation. Its PoE+ capabilities, surge protection, and flexible uplink options make it a versatile backbone for powering and connecting critical devices across distributed infrastructures.



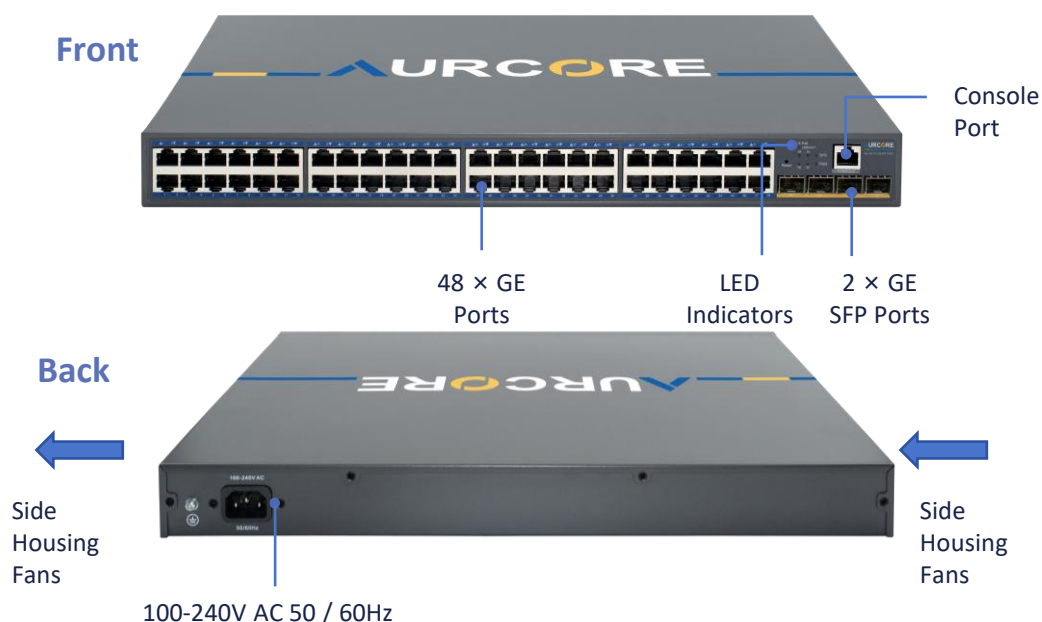
## Product Highlights

- 48 × GE (PoE+ RJ45 ports) and 4 × GE SFP uplink ports
- Support both IEEE 802.3af PoE and IEEE 802.3at PoE+
- Switching capacity: 104 Gbps; forwarding rate: 77.38 Mpps
- Compact Layer 2+ managed switch for enterprise-grade networking
- Surge Protection: Differential mode ±1KV, Common mode ±2KV
- Operating temperature range: 0°C to 40°C (32°F to 104°F)
- Strong Compatibility: Compatible with mainstream terminal devices in the industry, such as APs and IP Cameras
- Advanced AurC-PoE Technology: PoE Watch dog, PoE Schedule, PoE Port Priority, PoE Power Budget Management, PoE Legacy, PoE High-inrush Status
- Supports Static Routing, VLAN, STP, RSTP, MSTP, QoS and ACL functions
- Managed via Telnet, SSH, SNMP, Web GUI, CLI, AURC-NOS and ACC/ACN unified platform

# Hardware Specifications

Model	AES2003P
Interface	48 x GE   4 x GE SFP   PoE+
Management Port	1 x Console Port
Mac Address Table	16 K
Packet Forwarding Rate	77.376 Mpps
Switching Capacity	104 Gbps
Flash	32 MB
Memory	128 MB
PoE Standard	IEEE 802.3af/at
Power Supply	438 W
PoE Budget	370 W
Operating Temperature	0 °C to 40 °C (32 °F to 104 °F)
Storage Temperature	-40 °C to 70 °C (-40 °F to 158 °F)
Surge Protection	Differential mode ±1KV, Common mode ±2KV
Electrostatic Standards	Contact ±6KV, Air ±8KV
Dimension(L*W*H)	17.32" × 12.99" × 1.73"
Installation	Rack mount or desktop mount
Accessories	Rack Mount Kit *2, Rubber Feet *4, Screw *8, Console Cable *1, Power Cord *1

## Hardware Panel



# Software Specifications

## HIGH AVAILABILITY

- Support 4K Active VLAN, Voice VLAN
- Support static/LACP link aggregation
- Support BPDU Guard/filtering/transparent
- Support Root Guard and Loopback detection
- Support FTP, TFTP and SFTP
- Support IGMP Snooping

## NETWORK CONFIGURATION

- Support Web management
- Support SNMP v1, v2c, v3, SNMP Trap
- Supports RSPAN, multiple configuration files
- Support MIB-II, NTP, Ping, Traceroute and ZTP(Zero Touch Provisioning)
- Support LLDP (802.1ab)
- Support flow-based mirror
- Support Static Routing

## QoS FUNCTION

- **Rate Limiting:** Port-based (incoming/outgoing), Stream-based rate limiting
- **Class Of Service:** Based on port, source-destination MAC, source-destination IP, 802.1p, CoS, DSCP, IP priority
- **Prioritization Algorithm:** WRR,SP, WDRR, DSCP & CoS mapping
- **Loop Detection:** ERPS

## SECURITY

- **Access Control:** Port Security, Port Isolation, IP source protection, Dynamic ARP protection, DHCP Snooping, DHCP Relay, IEEE802.1x AAA, ACL, User hierarchy, RADIUS/TACACS+, authentication(RFC2138)
- **Data Protection:** Broadcast storm suppression, Illegal packet detection, DDoS Attack Prevention, HTTPs and SSL

## RELIABILITY

- **Link Protection:** STP, RSTP, MSTP, BPDU Guard, STP Root Guard, Loop Protection/Detection, BFD Detection, Ethernet OAM, ULDP.ERPS fast ring network protection, MRPP fast link switching

## MANAGEMENT & MAINTENANCE

- **Interfaces:** Console port, Telnet, SSH
- **Protocols:** SNMPv1/v2c/v3, TFTP (file upload/download)
- **Management Modes:** CLI command line, Web NMS, TELNET
- **Functions:** Firmware Upgrade, Configuration Export/Import, DHCP Client (Option 82/66/67) Event/Error Logs (System Log), Management Access Control, Port Mirror, LLDP (IEEE802.1AB) LLDP-MED, DNS Client, Trace-route, Ping, DDMI. NTP/ SNTP (RFC2030)

